



Order code: INEO5500BAA

## Controller for parallel hybrid applications

# Datasheet

### Product description

- InteliNeo 5500 is a microgrid controller that offers a cost-effective solution for combining traditional grid or gen-sets with renewable energy sources to create a reliable and efficient power generation system.

### Key benefits

- One controller for renewables and storage devices
- Configurable microgrid applications MPTM and MINT
- Modbus client onboard for flexible integration of devices via RTU or TCP
- Clear visualisation of critical information on the 5" built-in colour TFT display

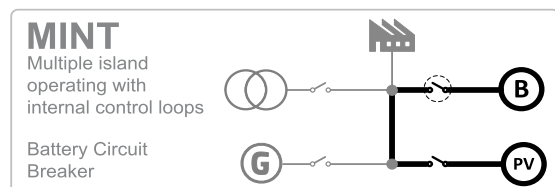
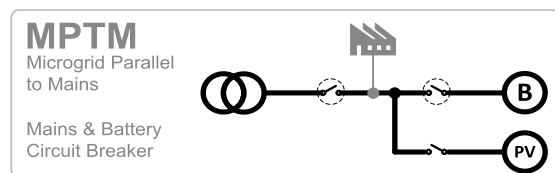
### Key features

- Modbus Client support of up to 9 devices for RTU/TCP communications to inverters and storage systems
- Cooperates with up to 3 gen-set/mains controllers or expand up to 7\* other devices
- Supports black start of grid-forming battery storage systems
- Built-in PLC interpreter with the use of ComAp's free PLC Editor
- AirGate 2.0 for easy connection to your equipment remotely, without worrying about your asset's IP address
- User-defined protections and setpoints on top of default parameters
- Remote control and monitoring of your gen-set operations with WebSupervisor, our cloud-based fleet management tool
- Compatible load/Var sharing and power management with other ComAp solutions
- Event-based history for fast and easy troubleshooting

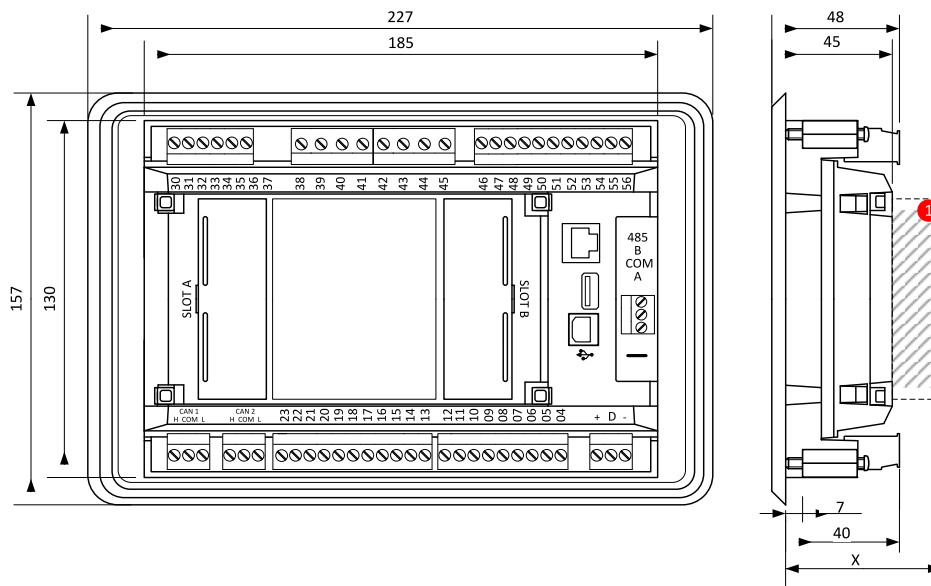
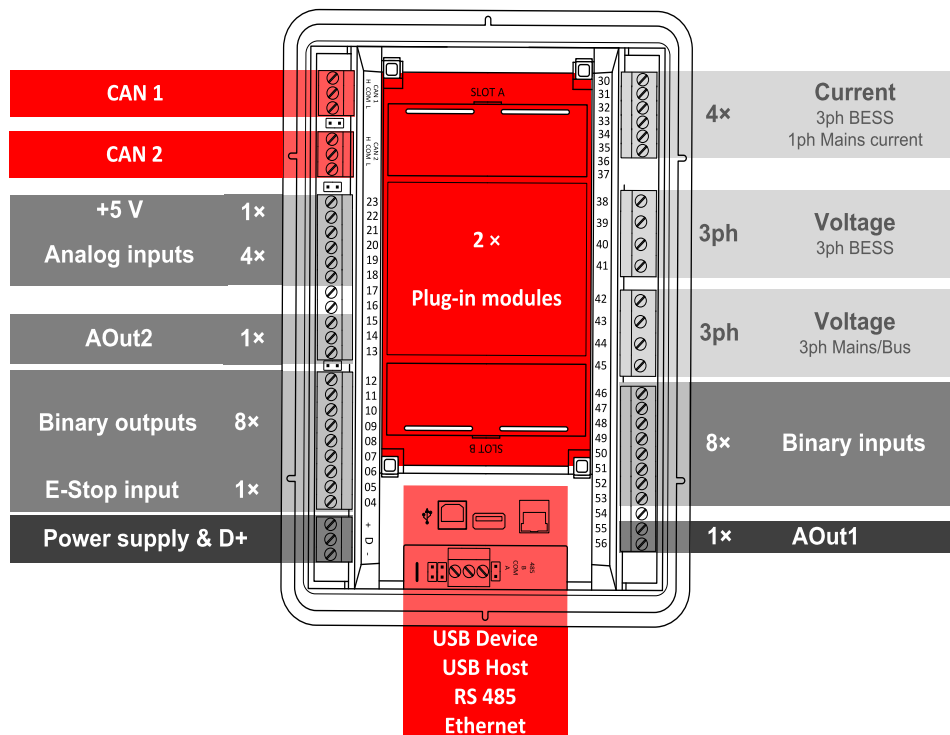
- Peak shaving for limiting the import from the mains (e.g., due to higher prices)
- Load shedding ensuring the most important loads are running even when there is a lack of power
- Keeping your business and data with design to the ISA 62443 level 2 - level 3 security requirements
- Slots for plug-in modules for 4G and GPS, additional Ethernet port, RS232/485 connection or additional binary inputs/outputs

\*Features available with software key

### Application overview



## Terminals and dimensions



### Plug-In module

**Note:** Dimensions are in millimeters, dimension of "x" depends on a plug-in module,

**Note:** The final depth of the controller depends on the selected plug-in module – it can vary between 47 mm and "x" mm. Mind also the size of connectors and cables (e.g. in case of RS232 connector, add about 60 mm more for standard RS232 connector and cable).

**Note:** The controller is mounted into panel doors as a standalone unit using provided holders. The requested cutout size is 187 × 132 mm. Use the screw holders delivered with the controller to fix the controller into the door.

## Technical data



### Power supply

Power supply range	8-36 V DC
Power consumption (without modules)	6 W
RTC battery	Replaceable, 3V
Fusing power	5 A / 6 × 0.5 A BOUT
Fusing ESTOP	2 A
Max. Heat Dissipation	10 W

### Operating conditions

Protection degree	IP65
Operating temperature	-30 °C to +70 °C (-40 °C to +70 °C)*
Storage temperature	-30 °C to +80 °C
Operating humidity	95 % non-condensing (EN 60068-2-30)
Vibration	5-25 Hz, ± 1.6 mm 25-100 Hz, a = 4 g
Shocks	a = 500 m/s <sup>2</sup>
Surrounding air temperature rating 70 °C.	
Suitable for pollution degree 2.	

### Voltage measurement

Measurement inputs	3ph-n BESS voltage 3ph-n Mains voltage
Measurement range	10-277 V AC / 10-480 V AC (EU) 10-346 V AC / 10-600 V AC (US/Canada)
Linear measurement and protection range (maximal voltage)	350 V AC Ph-N / 660 V AC Ph-Ph
Accuracy	1 %
Frequency range	30-70 Hz (accuracy 0.1 Hz)
Input impedance	0.72 MΩ ph-ph , 0.36 MΩ ph-n

### AOut1/VRO

Isolation	Isolated
Type	max ±10 V DC

### Aout2/SRO

Isolation	Non-isolated
Type	±10 V DC PWM selectable by jumper

### Display

Type	Build-in colour TFT 5"
Resolution	800 × 480 px

### Communications

USB device	Non-isolated, USB type B
USB host	Non-isolated, USB type A
RS 485	Isolated
Ethernet	10/100 Mbit
CAN 1A	Isolated, 250/50 kbps
CAN 2A	Terminator impedance 120Ω

## Current measurement

Measurement inputs	3ph BESS current 1ph Mains current
Measurement range	5 A
Max. allowed current	10 A
Accuracy	±20 mA for 0-2 A; 1 % of value for 2-5 A
Input impedance	<0.1 Ω

### E-Stop

Dedicated terminal for safe Emergency Stop input.
Physical supply for binary outputs 1 & 2.

### Binary inputs

Number	8, non-isolated
Close/Open indication	0-2 V DC close contact 6-36 V DC open contact

### Binary outputs

Number	8, non-isolated
Max. current	BO 1-8 = 0.5 A
Switching to	Positive supply terminal

### Analog inputs

Number	4, switchable (R/U/I)
Range	R = 0-2500 Ω; U = 0-10 V; I = 0-20 mA
Accuracy	R: ±2 % from value ±5 Ω in range 0-250 Ω R: ±4 % from value in range 250 Ω-2500 Ω U: 1 % from value ±100 mV I: 1 % from value ±0.2 mA

### +5 V Power supply output

Max. current	100 mA
--------------	--------

**Note:** \*) If the device is powered on above -30 °C

## Available simulator

Product	Order code
InteliNeo 6000 StarterKit	SM1INEO6BAB

## Available plug-in modules

Product	Description	Order code
CM-RS232-485	Dual port interface	<a href="#">CM223248XBX</a>
CM2-4G-GPS	4G & GPS plug-in communication module	<a href="#">CM24GGPSXBX</a>
CM3-Ethernet	Internet / Ethernet plug-in communication module	<a href="#">CM3ETHERXBX</a>
EM-BIO8-EFCP	8 additional binary inputs/outputs	<a href="#">EM2BIO8EXBX</a>

**Note:** Controller has 2 slots for plug-in modules.

## Available external displays

Product	Description	Order code
InteliVision 5.2	5" TFT external display with 800x480 px resolution	<a href="#">RD2IV5BXBAA</a>
InteliVision 10Touch	10.1" Touchscreen display uni with 1280 x 800 px resolution	<a href="#">RD1IV10TBPF</a>
InteliVision 13Touch	13.3" Marine certified display unit with 1920 x 1080 px resolution	<a href="#">RD1IV13TBME</a>
InteliVision 18	18.5" Touchscreen display unit with 1366 x 768 px resolution	<a href="#">RD31840PBIE</a>

## Available CAN modules

Product	Description	Order code
IGL-RA15	Remote Annunciator w/ 15 programmable LEDs	<a href="#">EM2IGLRABAA</a>
Inteli AIN8	8 Analog Input Channels and 1 RPM/Impulse Input Module	<a href="#">I-AIN8</a>
Inteli IO8/8	16 Configurable Binary Inputs/Outputs and Analog Outputs Module	<a href="#">I-IO8/8</a>
IGS-PTM	4 Analog Inputs, 1 Analog Output, 8 Binary Inputs and 8 Binary Outputs	<a href="#">IGS-PTM</a>
Inteli AIN8TC	8 Analog Input Channels for termocouples measurement	<a href="#">I-AIN8TC</a>
Inteli AIO9/1	4 Analog Inputs for differential voltage measurement, 4 Analog Input equipment channels, 1 Analog Input for resistance measurement and 1 Analog Output	<a href="#">I-AIO9/1</a>
I-CR	CAN Repeater Module	<a href="#">I-CR</a>
I-CR-R	CAN Redundancy Module	<a href="#">I-CR</a>

## Functions and protections

Support of functions and protections as defined by ANSI (American National Standards Institute):

Description	ANSI code	Description	ANSI code	Description	ANSI code
Master unit	1	Master sequence device	34	Power factor	55
Stopping device	5	Undercurrent	37	Overvoltage	59
Multi-function device	11	Unit sequence starting	44	Alarm relay *	74
Speed and frequency matching device	15	Current unbalance	46	Vector shift	78
Data communications device	16EFT 16SC	Voltage unbalance	47	Reclosing relay	79
Starting-to-running transition contractor	19	Incomplete sequence relay	48	Overfrequency	81H
Synchronizing-check	25	Temperature monitoring	49T	Underfrequency	81U
Thermal relay	26	Overcurrent	50/50TD	ROCOF	81R
Undervoltage	27	Earth fault current	50N+64	Auto selective control/transfer	83




E-mail: [info@comap-control.com](mailto:info@comap-control.com)  
 Web: [www.comap-control.com](http://www.comap-control.com)

**ComAp**   
 The heart of smart control

Description	ANSI code	Description	ANSI code	Description	ANSI code
Annunciator	30	Overcurrent IDMT	51	Regulating device	90
Overload	32	Earth fault current IDMT	51+64		
Load shedding	32P	AC circuit breaker	52		

\* extension module IGL-RA15 required

### Certifications and standards

<ul style="list-style-type: none"> <li>&gt; EN 61000-6-2</li> <li>&gt; EN 61000-6-4</li> <li>&gt; EN 61010-1</li> <li>&gt; EN 60068-2-1 (-40 °C/16 h)</li> <li>&gt; EN 60068-2-2 (70 °C/16 h)</li> </ul>	<ul style="list-style-type: none"> <li>&gt; EN 60068-2-6 (2±25 Hz / ±1,6 mm; 25±100 Hz / 4,0 g)</li> <li>&gt; EN 60068-2-27 (a=500 m/s<sup>2</sup>; T=6 ms)</li> <li>&gt; EN 60068-2-30 (25/55 °C, RH 95%, 48 h)</li> <li>&gt; UKCA</li> <li>&gt; UL 6200</li> </ul>	
--	--	---

### Grid codes

European Requirements for Generators, 2016/631		
> UK ENA EREC G99	> EN50549-1	> EN50549-2

### List of SW Key Features

SW Key Feature	Order Code
Intercontroller Expansion	SKCAN2EXP01
Universal Genset Support	SKUNIGENSUP01



E-mail: [info@comap-control.com](mailto:info@comap-control.com)  
 Web: [www.comap-control.com](http://www.comap-control.com)

**ComAp**   
 The heart of smart control